

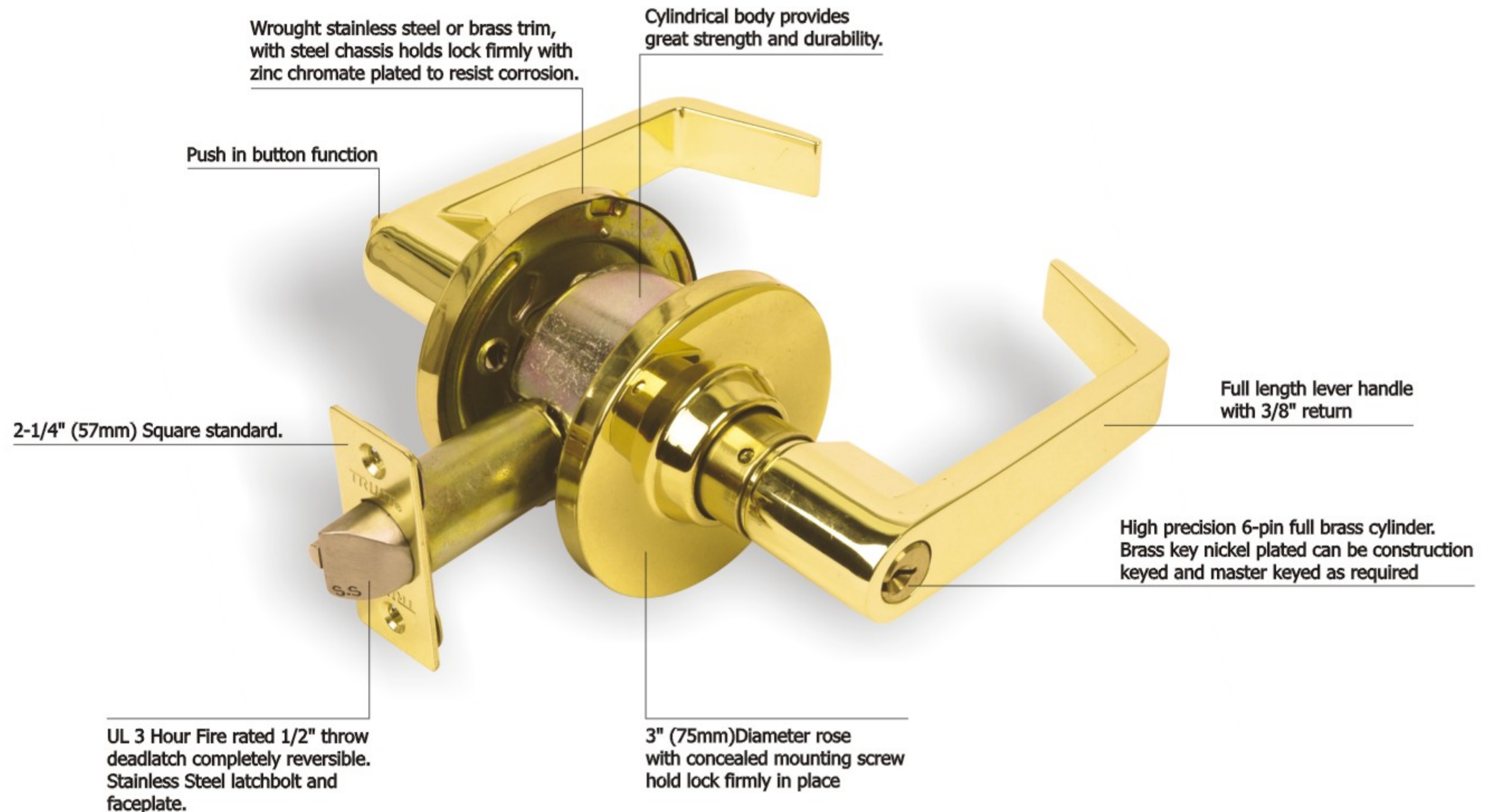
Heavy Duty Commercial Lever Series- Grade 2

Special Design for Standard Duty.

Meets With ANSI A156.2 Grade 2.Exceeds 400,000 Cycles.

- **Door Prep:** Cross bore 2-1/8" (54mm), Edge bore 1" (25mm), Latch face 1"x2-1/4" (25x57mm).
- **Door Thick:** 1-3/8" (35mm) to 1-3/4" (45mm) thickness doors as Standard.
1-3/8" (35mm) to 2" (50mm) thickness doors by changeable Rosette.
- **Backset:** 2-3/4"(70mm) standard. 2-3/8"(60mm) optional.
- **Latch:** 1/2" throw dead latch and spring latch.
- **Cylinder:** 6-pin removable core, Schlage C Keyway or Kwikset or YALE or C4 keyway and other optional.
- **Faceplate:** Square corner 1"x2-1/4" (25x57mm) standard.
- **Strike:** T-Shape 1-3/4"x2-3/4" (44x70mm) Square corner standard.
- **Function:** ET(Entrance), BK(Privacy), PS(Passage), ST(Storeroom), CL(Classroom), HT(Hotel), DM(Dummy).

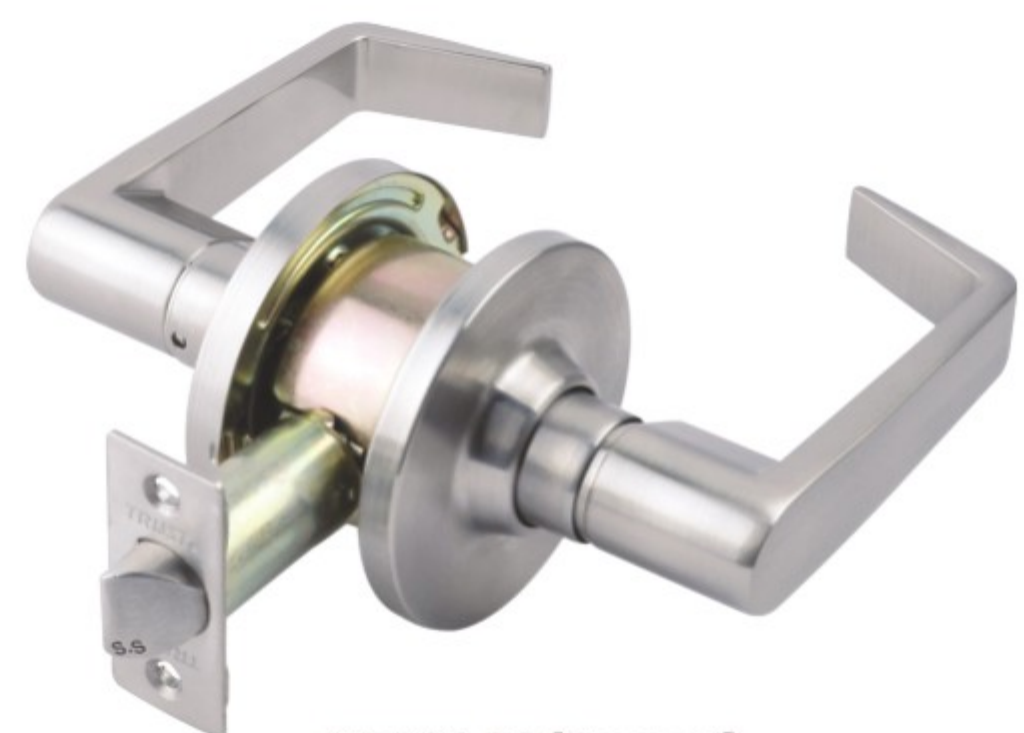
Code: 4 47 1 SS
 Finish
 Function
 Lever Type
 Series(4=Commercial Use)



4471PB-ET



4472SC-BK (Privacy)



4473SC-PS (Passage)



4475SN-CL (Classroom)

